

We Change People's Fortunes



	Starter Pack (part # 3228-0102)	Standard Pack (part # 3228-0101)
Overview	Ultimate performance multi-frequency TREASURE detector with enhanced FeCo discrimination, integrated GPS and wireless audio options, all in a sleek rugged design that is waterproof (IP68 rating) to 10 ft (3 m).	
Search Modes	10 fully customisable, including 5 preset (Coins, Beach, Relic, Silver & High Trash) 2 Pinpoint options (Normal and Sizing)	
Discrimination Patterns	20 fully customisable (2 per Search Mode)	
Discrimination Type	Enhanced Colour discrimination (35 Fe x 50 Co = 1750 segments), Target Trace, Target Trace Pinpoint, Tone ID Profiles, Target Separation (Ferrous-Coin and Ground-Coin), Accept/Reject cursors	
Ground Compensation	Auto Compensation and Auto Ground Balance	
Noise Cancel	Auto and Manual (11 channels)	
Threshold	Level adjustment (1-50), Pitch adjustment (1-30)	
Sensitivity	Auto and Manual (1-30)	
Display	Full colour LCD with backlight and adjustable brightness (1-10)	
Standard Coil (CTX 11)	11-inch waterproof Double-D smart coil	
Audio Outputs	Built-in speaker, standard ¼-inch non-waterproof socket, custom waterproof socket (Minelab accessory headphones only)	
Wireless Audio (WM 10)	No (available as accessory)	Yes (supplied with detector)
Headphones	KOSS UR30 (100 ohm) supplied with detector (non-waterproof)	
Batteries (Li-ion pack)	Yes (with fast charger). 12 V car adapter supplied with Standard Pack only	
Batteries (8 x AA pack)	No (available as accessory)	Yes (supplied with detector [^])
Length	Min 37 in. (940 mm) – Max 55.3 in. (1405 mm)	
Weight	5.20 lbs (2.36 kgs) including Li-ion battery pack	
PC Connection	XChange 2 (via USB) compatible with Windows XP, Vista and 7	
Key Technologies	FBS 2, Smartfind 2, GPSi, Wi-Stream	

Accessories



CTX 06 Smart Coil (part # 3011-0114)

The waterproof 6-inch round Double-D coil is very sensitive to small targets, and perfect for finding treasure in high trash areas. It is also ideal for manoeuvring in difficult terrain. A protective skidplate is included.



CTX 17 Smart Coil (part # 3011-0116)

The waterproof 17 x 13-inch elliptical Double-D coil provides maximum depth for specialised treasure hunting. It is also great for wide ground coverage in open spaces. A protective skidplate is included.



Waterproof Headphones (part # 3011-0134)

These fully submersible headphones provide excellent audio for all weather conditions and underwater use.



WM 10 Wireless Module* (part # 3011-0120)

This module provides clear wireless audio without any perceivable time delay. Use the built-in speaker or your choice of headphones.



Replaceable Battery Pack*^ (part # 3011-0117)

Forgotten to charge your battery? This pack provides the option of using 8 x AA cells as an alternate power source.

*Supplied with Standard Pack only. Available as accessory for Starter Pack.
^Not supplied with AA battery cells.

Minelab Electronics Pty. Ltd.

Australia, New Zealand, & Asia

Technology Park, 2 Second Avenue,
Mawson Lakes, SA 5095, Australia

☎ +61 8 8238 0888

✉ minelab@minelab.com.au

Minelab Americas Inc.

North & Central America

123 Ambassador Drive, Suite 123
Naperville, IL 60540, USA

☎ +1 630 401 8150

✉ info@minelabamericas.com

Minelab International Ltd.

Europe

Penrose One, Penrose Dock,
T23KW81, Cork, Ireland

☎ +353 (0)21 423 2352

✉ minelab@minelab.ie

Minelab MEA General Trading LLC

Middle East & Africa

Unit S-1, Humaid Sultan Building,
Frij Al Murar, Deira, PO Box 6934,
Dubai, UAE

☎ +971 4 254 9995

✉ minelab@minelab.ae

Minelab do Brasil

Brazil

Rua Cristovão Nunes Pires 97,
sala 402, Centro, Florianópolis - SC
88010-400, Brazil

☎ +55 47 3406 3898

✉ minelabdobrasil@minelab.com

Minelab®, CTX®, Smartfind™ 2, FBS™ 2, Wi-Stream™, GPSi™, FindPoint®, GeoHunt™, GeoTrail™, XChange Your Detecting Connection™, Target Trace™, Ferrous-Coin Separation™, Ground-Coin Separation™ are trademarks of Minelab Electronics Pty. Ltd. Google Maps is a trademark of Google Inc. u-blox is a trademark of u-blox Holding AG.

4907-0507-6 Brochure, CTX 3030 4P A4 English


CTX 3030

The Future of Discovery



FBS 2 Smartfind 2  

World's Best Metal Detection Technologies


MINELAB

CTX 3030

Find amazing treasures that others have missed!

The waterproof all-terrain CTX 3030 is the ultimate high performance treasure detector. Discover more historical treasures with the most accurate target identification available. With a full colour LCD and advanced Target Trace discrimination you will find more treasure, even amongst junk littered areas, in all ground conditions.

Enjoy the freedom of wireless audio with the versatility of built-in speaker and headphone options. With Minelab's exclusive integrated GPS, you can navigate to your favourite locations and record your finds. Transfer your detecting information onto Google Maps using the XChange 2 PC application.

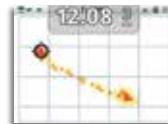


Target Trace

Multiple targets are displayed as coloured 'hot spots', or streaks.



Low conductive & high conductive coins



Low conductive coin and ferrous trash



High conductive coin and ferrous trash



Erratic Target Trace indicating rusty junk



Detect

When you are searching, the Detect screen shows you all the target information you need to find more treasure – you won't miss anything!



Identify

For quickly accepting or rejecting a detected target, the Identify function saves you time and effort!



Map

When you want to check treasure locations or ground you have covered, the Map screen shows you the way – no need for a separate GPS!



Store

For recording find locations and entire treasure hunts, the Store function does it all!

Features



Waterproof

You can go detecting anywhere with this versatile treasure detector. CTX 3030 is waterproof* to 10 ft (3 m).



Ultimate FeCo Discrimination

You can identify single or multiple targets simultaneously for accurate detecting results.



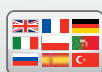
GPS Locating

See where you have been, and where you are going, by using the Map screen and Navigation Tool.



Quick Menus

Quick Menus give you easy access to 'on the go' adjustments.



Multi-Languages

Choose from 9 languages: English, French, German, Italian, Polish, Portuguese, Russian, Spanish or Turkish.



Wireless Audio

With the WM 10 Wireless Module^ you have the choice of using the built-in speaker, or headphones.



Full Colour Display

The full colour LCD clearly displays more target information than ever before.



PC Mapping (with Google Maps)

Upload all of your detector settings and treasure locations to your PC using the XChange 2 application.



Ergonomic Design

The well balanced design has all the battery weight behind the armrest for comfortable detecting.



Key Technologies

With FBS 2, Smartfind 2, GPSi and Wi-Stream, Minelab takes the detection technologies to the next level.

Success Stories



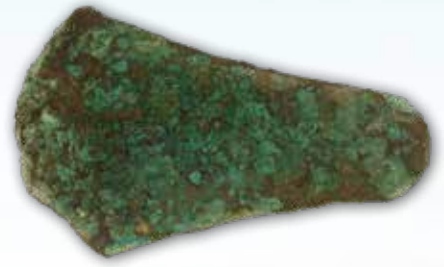
"I had [a] few reasons to be exceptionally happy. One, this was a dream find; two, [this] was the best find of the trip beating the XPs and lastly, a 500 mile each way trip was surely made worthwhile."

- **Paul**



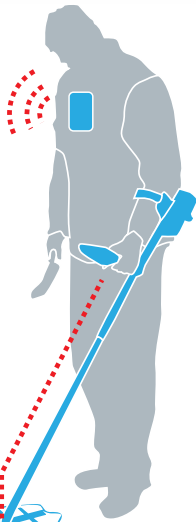
"Once I cleared the dirt, I realised it was older... A Charles II Scottish Quarter Dollar that hadn't seen the light of day for 300 years..."

- **Ally**



"About 16 inches down I noticed the object at the bottom... I realised what I had found was a bronze axe head."

- **Pat**



WM 10 Wireless Module*

Choose from three wireless audio options:

1. Use the built-in speaker on the WM 10
2. Connect the supplied headphones to the ¼-inch socket on the WM 10
3. Connect your own favourite headphones to the ¼-inch socket on the WM 10



CTX 3030 Detector Audio

Choose from four wired audio options:

1. Use the built-in speaker on the detector
2. Connect the supplied headphones to the ¼-inch socket on the Headphone Module
3. Connect your own favourite headphones to the ¼-inch socket on the Headphone Module
4. Connect the waterproof headphones[^] to the waterproof socket after removing the standard Headphone Module

*Supplied with Standard Pack only. Available as accessory for Starter Pack.

[^] Available as accessory.

XChange 2 & Google Maps

XChange 2
Your Detecting Connection

Your world of discovery can now be simply managed on your personal computer (PC). XChange 2 allows you to store and retrieve a combination of finds, detector and location data. This information can also be displayed on Google Maps. It has never been easier to keep track of your detecting adventures and plan your next hunt.

